

**H24028 - Amethyst**

Gluten	Soya	Peanuts	Nuts	Sesame	Lupin	Milk	Eggs	Sulphites	Celery	Mustard	Fish	Molluscs	Crustacean
<b>Mandatory allergens contains:</b>													
✓	✓	✓	✓	z		✓	✓	✓	✓	z			
<b>Key</b>													
✓	Listed in ingredients												
z	May contain traces												

**Product Name:** Alfonso The Grape 75cl (13% ABV)

**Ingredients:** N/A

**Allergens:** Contains **SULPHITES**.

**Storage:** Store in a cool, dry place.

**Typical Value per 100g**

Energy (kj):	N/A
Energy (kcal):	N/A
Fat (g):	N/A
Fat of which saturates (g):	N/A
Carbohydrate (g):	N/A
Carbohydrate of which sugars (g):	N/A
Protein (g):	N/A
Salt (g):	N/A

**Product Name:** Prosecco Spum DOC Accademia 75cl (11% ABV)

**Ingredients:** N/A

**Allergens:** Contains **SULPHITES**.

**Storage:** Store in a cool, dry place.

**Typical Value per 100g**

Energy (kj):	N/A
Energy (kcal):	N/A
Fat (g):	N/A
Fat of which saturates (g):	N/A
Carbohydrate (g):	N/A
Carbohydrate of which sugars (g):	N/A
Protein (g):	N/A
Salt (g):	N/A

**Product Name:** Hebridean Baker Heather Honey Shortbread 150g



**Ingredients:** **WHEAT** Flour (Calcium Carbonate, Iron, Niacin, Thiamin), Margarine (Palm Oil, Rapeseed Oil, Water, Salt, Emulsifier: E475, Colour: E100; E160b, Flavourings), Butter (**MILK**), Sugar, Rice Flour, Scottish Heather Honey (5.5%), Blossom Honey (5.5%).

**Allergens:** For allergens, see ingredients in **CAPITALS**. May contain **CELERY, EGGS, MUSTARD, NUTS, SESAME, SOYA**.

**Storage:** Once opened, store in an airtight container in a cool, dry place.

**Typical Value per 100g**

<b>Energy (kj):</b>	2220
<b>Energy (kcal):</b>	531
<b>Fat (g):</b>	29.4
<b>Fat of which saturates (g):</b>	13.4
<b>Carbohydrate (g):</b>	60.7
<b>Carbohydrate of which sugars (g):</b>	17.3
<b>Protein (g):</b>	5.1
<b>Salt (g):</b>	0.7

**Product Name:** Joe & Seph's Chocolate Fudge Cake Popcorn 30g

**Ingredients:** Corn, Sugar, Butter (**MILK**), Biscuits (60%), (**WHEAT** Flour (**WHEAT** Flour (13%), Calcium, Iron, Niacin, Thiamin)), Cream Cheese Powder (6%) (**MILK**), Glucose Syrup, Dark Chocolate (4.5%) (Cocoa Mass, Sugar, Cocoa Butter, Emulsifier (**SOYA** Lecithin), Natural Vanilla Flavouring ), Whipping Cream (**MILK**)(4.6%), Evaporated **MILK** (Whole **MILK** Stabiliser (Sodium Phosphates) Vitamin D). Minimum 9% **MILK** Fat, 22% **MILK** Solids Not Fat ), Cocoa Powder, Vanilla Powder, Salt.

**Allergens:** For allergens, see ingredients in **CAPITALS**. Made in an environment where **NUTS, PEANUTS** and **SESAME SEEDS** are present.

**Storage:** Store in a cool, dry place.

**Typical Value per 100g**

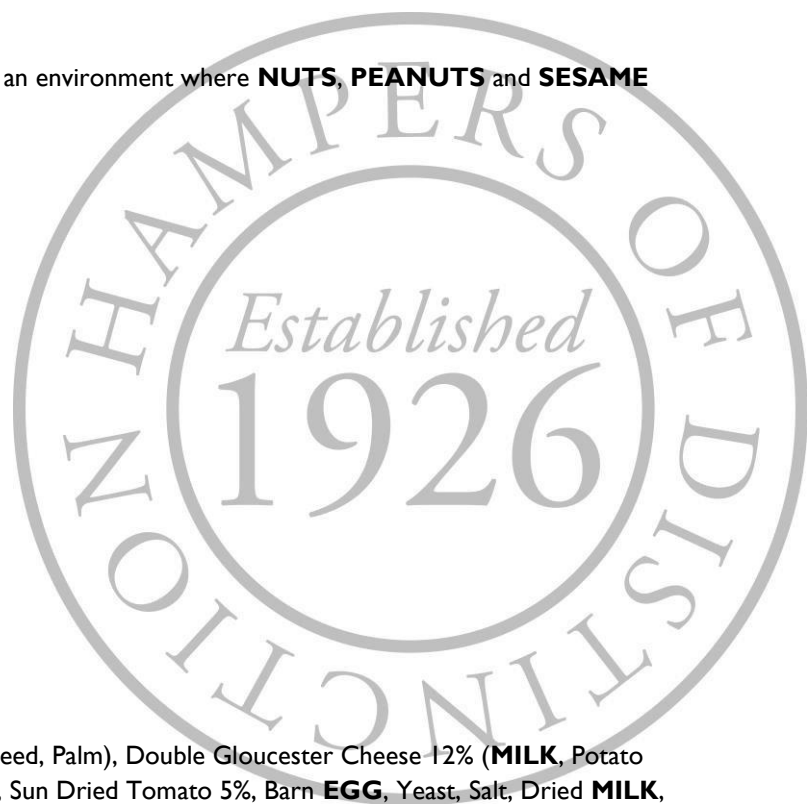
<b>Energy (kj):</b>	1912
<b>Energy (kcal):</b>	457
<b>Fat (g):</b>	25.1
<b>Fat of which saturates (g):</b>	15.2
<b>Carbohydrate (g):</b>	56.3
<b>Carbohydrate of which sugars (g):</b>	33.8
<b>Protein (g):</b>	5.1
<b>Salt (g):</b>	1.18

**Product Name:** Buiteman Sun Dried Tomato Biscuits 75g

**Ingredients:** **WHEAT** Flour (**GLUTEN**), Vegetable Oils (Rapeseed, Palm), Double Gloucester Cheese 12% (**MILK**, Potato Starch, Salt, Starter Culture, Vegetarian Rennet, Colour: E160b(ii)), Sun Dried Tomato 5%, Barn **EGG**, Yeast, Salt, Dried **MILK**, Tomato Powder, Sugar, Sunflower Oil, Herbs (Contain **CELERY**), Spices, Onion Powder, Vinegar, Emulsifier: E471, Yeast Extract, Acidity Regulator: Citric Acid, Antioxidant: Ascorbic Acid, Natural Flavouring.

**Allergens:** For allergens, see ingredients in **CAPITALS**. May contain traces of **NUTS, SESAME** and **SOYA**.

**Storage:** Store in a cool, dry place.



#### Typical Value per 100g

Energy (kj):	2268
Energy (kcal):	544
Fat (g):	34
Fat of which saturates (g):	12
Carbohydrate (g):	46
Carbohydrate of which sugars (g):	1.2
Protein (g):	11
Salt (g):	2.7

**Product Name:** Grandma Wild's 4 Traditional Mince Pies

**Ingredients:** Mincemeat (52%) (Sugar, Apple Puree (Apple Puree, Preservative: Acetic Acid), Vine Fruits (28%) (Sunflower Oil), Glucose Fructose Syrup, Mixed Peel (4%) (Orange Peel, Glucose Fructose Syrup, Sugar, Lemon Peel, Acidity Regulator: Citric Acid), Vegetable Suet (Palm Oil, Rice Flour, Sunflower Oil), Acidity Regulator: Acetic Acid, Citric Acid, Modified Maize Starch, Mixed Spice, Roast Barley Malt Extract, Colour: Caramel, Salt, Orange Oil, Lemon Oil), **WHEAT** Flour (**WHEAT** Flour, Calcium Carbonate, Iron, Niacin, Thiamin), Vegetable Oil (Palm, Rapeseed, Water, Salt, Natural Flavouring), Sugar, Maize Starch, Invert Sugar Syrup.

**Allergens:** For allergens, see ingredients in **CAPITALS**. Not suitable for **NUT** and **SESAME** allergy sufferers. May also contain **EGG, MILK, MUSTARD, SOYA, PEANUT** and other **GLUTEN** sources (**OAT**, Spelt, Rye).

**Storage:** Store in a cool dry place. Once opened store in an airtight container.

#### Typical Value per 100g

Energy (kj):	1591
Energy (kcal):	379
Fat (g):	15
Fat of which saturates (g):	5.7
Carbohydrate (g):	60
Carbohydrate of which sugars (g):	35
Protein (g):	2.3
Salt (g):	0.21

**Product Name:** Elizabeth Shaw Fruit & Nut Biscuits 140g

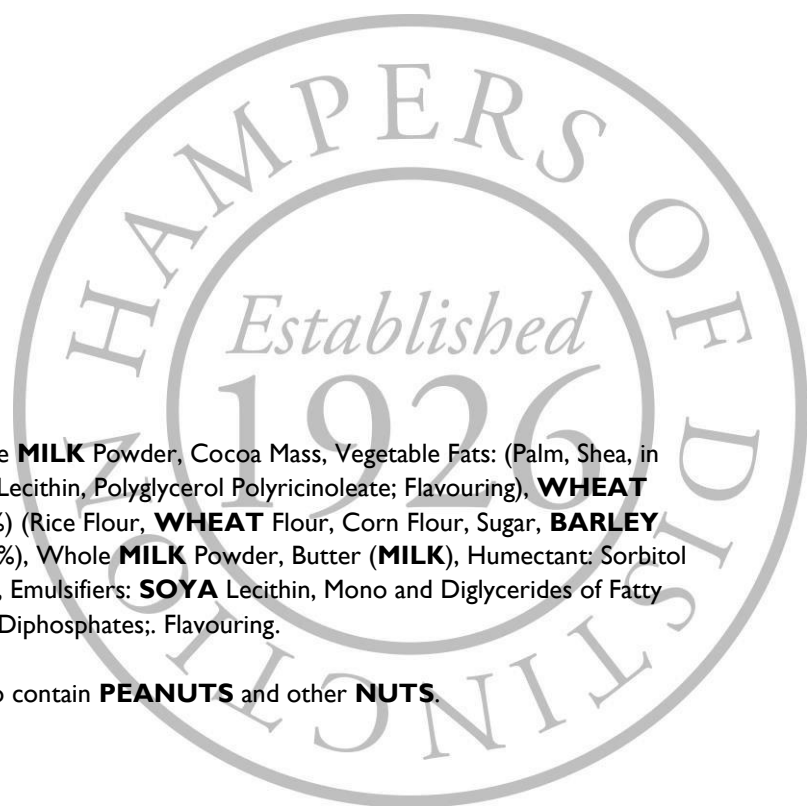
**Ingredients:** Milk Chocolate (35.5%) (Sugar, Cocoa Butter, Whole **MILK** Powder, Cocoa Mass, Vegetable Fats: (Palm, Shea, in Varying Proportions); Whey Powder (**MILK**), Emulsifiers: **SOYA** Lecithin, Polyglycerol Polyricinoleate; Flavouring), **WHEAT** Flour, Sugar, Glucose Syrup, Invert Sugar Syrup, Grain Crisps (6.3%) (Rice Flour, **WHEAT** Flour, Corn Flour, Sugar, **BARLEY** Malt Extract, Salt), Palm Fat, Currants (3.3%), **HAZELNUTS** (3.3%), Whole **MILK** Powder, Butter (**MILK**), Humectant: Sorbitol Syrup; **BARLEY** Malt Extract, Starch, Whey Powder (**MILK**), Salt, Emulsifiers: **SOYA** Lecithin, Mono and Diglycerides of Fatty Acids; Raising Agents: Ammonium Carbonate, Sodium Carbonate, Diphosphates;. Flavouring.

**Allergens:** For allergens, see ingredients in **CAPITALS**. May also contain **PEANUTS** and other **NUTS**.

**Storage:** Store in a cool, dry place.

#### Typical Value per 100g

Energy (kj):	1990
Energy (kcal):	476
Fat (g):	22
Fat of which saturates (g):	11
Carbohydrate (g):	61



<b>Carbohydrate of which sugars (g):</b>	51
<b>Protein (g):</b>	5.7
<b>Salt (g):</b>	0.51

**Product Name:** Buttermilk Irish Cream Fudge 100g

**Ingredients:** Sugar, Sweetened Condensed **MILK** (Whole **MILK**, Sugar), Salted Butter (**MILK**, Salt), Golden Syrup, Glucose Syrup, Irish Cream Liqueur (1%) (**MILK**), Natural Irish Cream Flavouring, Salt.

**Allergens:** For allergens, see ingredients in **CAPITALS**. Made in a factory that uses **PEANUTS, NUTS** and **SOYA**.

**Storage:** Store in a cool, dry place.

**Typical Value per 100g**

<b>Energy (kj):</b>	1705
<b>Energy (kcal):</b>	405
<b>Fat (g):</b>	11.6
<b>Fat of which saturates (g):</b>	7.3
<b>Carbohydrate (g):</b>	73.6
<b>Carbohydrate of which sugars (g):</b>	70.9
<b>Protein (g):</b>	1.3
<b>Salt (g):</b>	0.52

**Product Name:** Cambrook Baked Mixed Nuts with Dark Chocolate Cranberries 65g

**Ingredients:** **PEANUTS** (31%), **CASHEWS** (25%), **ALMONDS** (25%), Dark Chocolate Cranberries (19%): Dark Chocolate (Cocoa Mass, Sugar, Cocoa Powder, Cocoa Butter, Emulsifier: Sunflower Lecithin, Natural Flavouring), Cranberries (Cranberries, Apple Juice Concentrate), Glazing Agent: Gum Arabic. Sunflower Oil, Salt.

**Allergens:** For allergens, see ingredients in **CAPITALS**. May contain various other **NUTS** and **SESAME**.

**Storage:** Store in a cool, dry place.

**Typical Value per 100g**

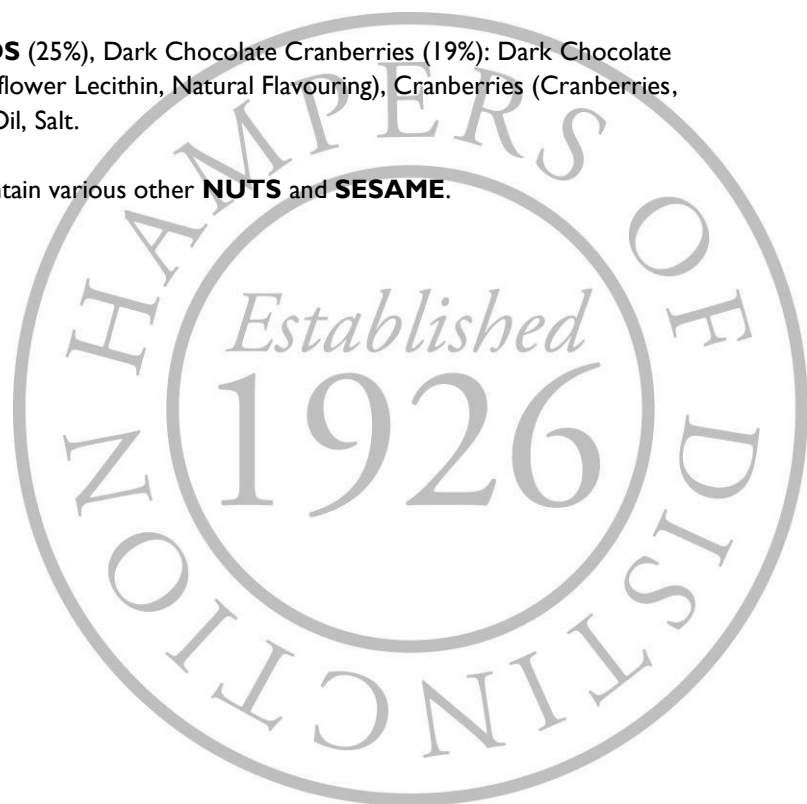
<b>Energy (kj):</b>	2421
<b>Energy (kcal):</b>	584
<b>Fat (g):</b>	48
<b>Fat of which saturates (g):</b>	9.3
<b>Carbohydrate (g):</b>	18.7
<b>Carbohydrate of which sugars (g):</b>	12
<b>Protein (g):</b>	18.8
<b>Salt (g):</b>	0.2

**Product Name:** Brown Bag Smoked Bacon Crisps 150g

**Ingredients:** Potatoes, Sunflower Oil, Seasoning (8%) (Lactose (**MILK**), Oak Smoked Sugar, Yeast Extract, Rice Flour, Salt, Sugar, Cooked Dried Bacon (Pork Meat, Curing Ingredients: Salt, Sodium Nitrate E251, Sodium Nitrate E250, Sodium Ascorbate, E301, Antioxidant: Rosemary Extract 0.1%), Flavouring, Paprika Extract, Acidity Regulator: Citric Acid).

**Allergens:** For allergens, see ingredients in **CAPITALS**.

**Storage:** Store in an ambient condition.



**Typical Value per 100g**

<b>Energy (kj):</b>	2082
<b>Energy (kcal):</b>	498
<b>Fat (g):</b>	26.7
<b>Fat of which saturates (g):</b>	2.3
<b>Carbohydrate (g):</b>	58.7
<b>Carbohydrate of which sugars (g):</b>	3.9
<b>Protein (g):</b>	5.6
<b>Salt (g):</b>	1.7

**Product Name:** Excelcium Pralines 180g

**Ingredients:** Sugar, **WHEAT** Starch, Whole **SOY** Flour, Glucose Syrup, Cocoa Butter, Palm Fat, Cocoa Mass, Glucose-fructose Syrup, Whole **MILK** Powder, **MILK** Sugar, Dextrose, **PEANUTS** 2%, **HAZELNUTS** 0.6%, Emulsifier: Lecithin, Humectant: Invertase, **SOY** Oil, Caramel Sugar Syrup, Orange Peel 0.2%, Rice Flour, Flavourings: Orange, Vanillin, Apricot, Amaretto, Toffee, Vanilla, **HAZELNUT** and Cream (**MILK**), Salt, Acid: Citric Acid.

**Allergens:** For allergens, see ingredients in **CAPITALS**. May contain traces of **EGG** and other **NUTS**.

**Storage:** Store in a cool, dry place.

**Typical Value per 100g**

<b>Energy (kj):</b>	1970
<b>Energy (kcal):</b>	472
<b>Fat (g):</b>	21
<b>Fat of which saturates (g):</b>	11
<b>Carbohydrate (g):</b>	63
<b>Carbohydrate of which sugars (g):</b>	47
<b>Protein (g):</b>	6.2
<b>Salt (g):</b>	0.08

**Product Name:** The Kindness Bakery Ploughmans Oatcake Bites 175g

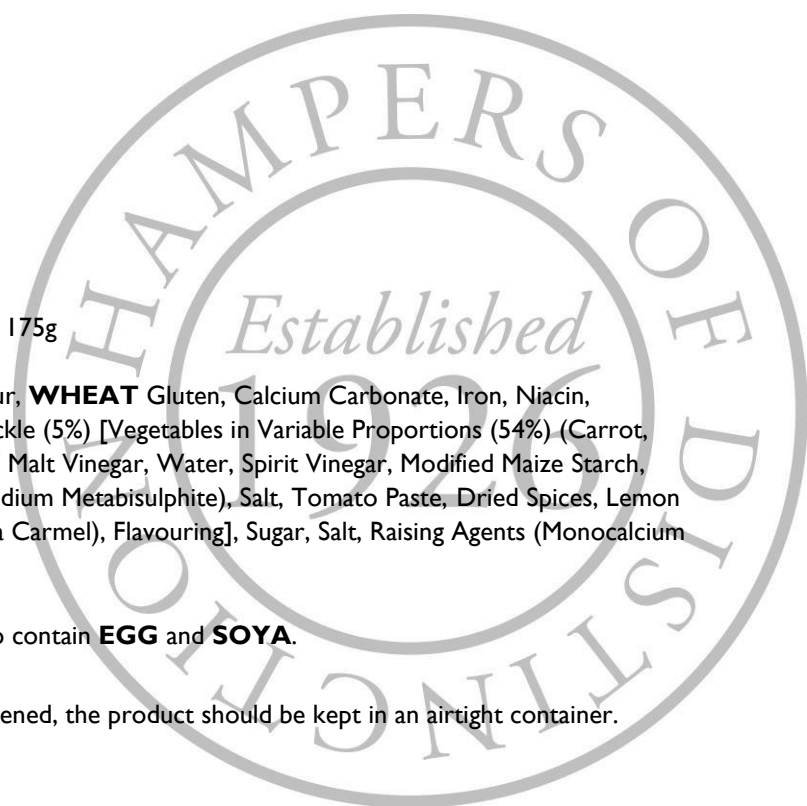
**Ingredients:** **OATMEAL** (48%) **WHEAT** Flour (**WHEAT** Flour, **WHEAT** Gluten, Calcium Carbonate, Iron, Niacin, Thiamin), Cheddar Cheese (13%) (**MILK**), Rapeseed Oil, Sweet Pickle (5%) [Vegetables in Variable Proportions (54%) (Carrot, Rutabaga, Onion, Cauliflower, Marrow, Gherkin). Sugar, **BARLEY** Malt Vinegar, Water, Spirit Vinegar, Modified Maize Starch, Date Paste: (Dates, Rice Flour), Apple Pulp (Apple Preservative: Sodium Metabisulphite), Salt, Tomato Paste, Dried Spices, Lemon Juice Concentrate, Onion Powder, Colour (**SULPHITE** Ammonia Carmel), Flavouring], Sugar, Salt, Raising Agents (Monocalcium Phosphate, Potassium Hydrogen Carbonate, Calcium Carbonate).

**Allergens:** For allergens, see ingredients in **CAPITALS**. May also contain **EGG** and **SOYA**.

**Storage:** Store in a cool, dry place out of direct sunlight. Once opened, the product should be kept in an airtight container.

**Typical Value per 100g**

<b>Energy (kj):</b>	1782
<b>Energy (kcal):</b>	428
<b>Fat (g):</b>	21.4
<b>Fat of which saturates (g):</b>	4.6
<b>Carbohydrate (g):</b>	47.2
<b>Carbohydrate of which sugars (g):</b>	4.7
<b>Protein (g):</b>	11.5



Salt (g):	2.1
-----------	-----

